



Men's Fashion Theory

Generally in the corporate world, anyone can easily make an impression depending on how you convey your self. The fundamental aspect on how one dresses up plays the largest role that will definitely make a statement. Our finest collection of suits for men states it all. May it be a black -tie event to casual leisure attire. Our expertise will definitely built that confidence and reputable look in you.

Wool Super 150's

The woven fabric structure can be very fine. The light weighted, high twist type of wools pioneered by its top mills using the highly advanced machines that spins wool lighter and basically a lot finer. The light weightedness depends on the wool type. They are all good fabric, and considerably finer and lighter either it be Super 100's, 120's and having super 150's as the most high quality fabric.

Q & A:

Q: Why Super Fabrics?

A: The distinction between the standard wool and a super 150's can be characterized by its softness and the outline of your body figure. The super fabrics are more finer and lighter than the other fabric.



Q: What is the difference of single and double breasted?

A: A single-breasted jacket closes with only one set of buttons, while the double-breasted has 2 sets of buttons that overlaps with each other, varying depending in the amount of buttons.

Q: What is double vented?

A: “**Double vented**” meant that the jacket has 2 opening slit area in the rear side of the jacket made to be sewn up, “**single vent**” has a single opening at rear middle of the jacket, while “**non-vented**” does not have any opening on any sides. Depending on the client’s body shape could be either way is as desired.

Q: How is the polyester fabric rating?

A: Polyester blended fabric candidly is also a durable twill fabric, but a little less refined though economical otherwise. Suggesting wearing dress shirts under polyester fabric is least advisable in any formal event, as it creases easily. We also recommend wearing a more finer fabric since it also blends with your outfit.



Q: What is the difference between a peak lapel, notch lapel & Shaw collar?

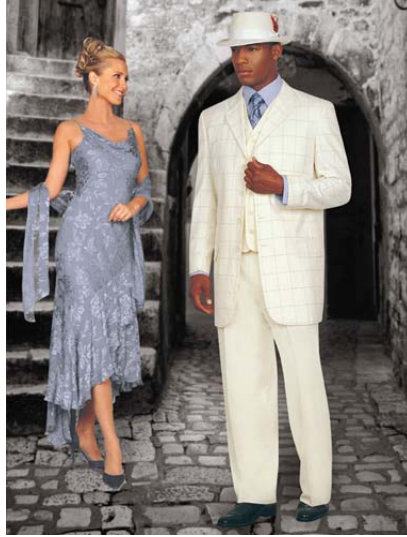
A: Notch lapel: has a triangular pattern, where the lapel is attached to the collar

Peak lapel: Is rarely seen on single breasted suits, designed in an upward and outward V-shape point

Shawl collars: A rounded lapel with no cut-outs. Mostly seen on tuxedos only.

Q: What is pick stitching?

A: It is a visible thread stitching of the same color outlining certain trimmings of the suit, typically looked like a hand finished tailoring, though equipped by machine. It not only enhances but also gives an "up to date" fashionable look.



Q: What is best to wear on an interview

A: Always keep in mind of the proverb “first impressions last” It actually is a proven fact. That impression conveys by your skills and attribute, and what you’re wearing plays an important part. First you should be wearing a well-tailored suit. Enhancing your look but not make a statement on it’s own, you can transmit yourself in your own sense of fashion, and can easily be recalled by the interviewer in two ways. That could be "You" wearing an appropriate color suit, matches correctly, well tailored and ideal, or "YOU" being recalled as an interviewee, wearing an inappropriate color, bad outfit, poorly tailored and uncoordinated attire. Considering dark colored suits such as dark blue, navy, charcoal, black or even dark olive are recommended. Given it conveys power and authority, which are greatly advised for assemblies or an indoor event. Pinstripes sometimes justify standing out more in a group. For some, they would rather have worn the solid basic ones, but either way, that would be your choice of presenting yourself. On the other hand light colored outfits is suitable for the “on the go” and outdoor job. Clearly, it would be so uncomfortable to wear a dark color outfits during the summer. If you have two sets of wardrobe in your closet, prefer unchanging standard or traditional and yet fashionable, and not to be remembered as “the guy who wears the same suit the last time”. Will it be an outdoor or indoor, or be more exposed with clients, or office based, keep in mind that anyone wearing the right outfit at the right juncture gives you the confidence that you will ever need in an interview, or nonetheless in any occasion. You will present yourself just right.



Q: What is the difference between 1,2,3 or 4 buttons? Will it matter if jacket were left open or closed?

A: We also have ways on how to button our suits, may it be a 1,2,3, or 4 buttons.

- 1 2Button suit- button only the top, leaving the other one below unbuttoned
- 2 3Button suit- either you button the top 2 or the middle button by itself.
Advisably not to button all three.
- 3 4Buttoned suit- either you button the top 3 or the middle 2, not all 4.

Key's to wear for the right occasion?

Business Formal Look

A well-tailored black or navy suit, matching a lighter shade of shirt, never to be worn button down, buttoned up to the top at all times with preferably French cuff. Match it with a patterned tie, not too many bright colors and to some extent something simple and yet coordinated. Shoes should be shined, mostly suggesting color black and leather belt to finish.



Authoritative Look

Highly reputable look which mostly worn by officials. A fine pinstriped or solid suit is optional. Double or single breasted. Matching a light solid colored shirt. Recommending a pinstripe shirt for a solid suit and a solid shirt for pinstripe suit. French cuff preferably as always, never to be worn button down, always to the top at all times, a strongly contrasting tie with either stripe patterned or a simple but yet no large designs. Coordinated with black leather belt and shoes. Accessories add more elegance, match it with a nice cuff links, and yet refrain from the flamboyant or showy image.

Corporate Look

Jacket or blazer is acceptable. Your selection of colored pants with medium to light colored shirt that may be button down. Coordinated tie. Tasteful jewelry that is not showy. Wear it with well-polished dark shoes with matching belt.

Business Casual Look

Sport jacket or blazer preferably wool, micro fiber or silk pants textured material would look enormous. Weave top or an open collared shirt. Short sleeves are all right, but long sleeves are the best. Never to wear sporty shoes, but instead leather shoes with belt is recommended. Add some accessories and yet not ostentatious.

Casual Look

A well pressed wool, micro fiber, cotton or cotton blend slacks with a knit top or open

collared shirt is a laid-back wear. Though short sleeves can also be worn, long sleeves are still superlative. Refrain from wearing t-shirts, it sometimes look substandard and at times takes away the tidy look in you. Nothing wrong with T-shirts especially if it has a good quality and fits you right, but long sleeve shirts are still highly recommended.

Pleats or Flat front?

Pleats are more relaxed, flat front are sleeker. Generally younger customers are now trying out flat fronts, often with 2-button with side vent suit. The popular of men are sticking with pleated front slacks. They would rather the more traditional and common, but trying the variety of styles is of no harm as long it fits you right.

Cuff or plain Hem?

Suggestion, never ever cuff a formal pants. That is a definite rebuff in fashion, especially the tuxedo. Pleated pants are the ones that are usually cuffed, 1.75" inches, they balance and fall out better with the extra weight of the pant cuff.